

Technical note 111: **Changing external flame barrier** of the **MIG-O-MAT** microflame series

MIG-O-MAT[®]



If the flame barrier is blocked by a backflash or clogged by flux it has to be changed. Also as it is a safety relevant part, we recommend to change it due to the conditions of use every 1-2 years.

To change it, you need a open-end wrensch with 10mm, 19mm, 20mm and 22mm.

Attention: the flame barrier can't be repaired and it is not allowed to open it.

1. Remove the gas tube on left side by unscrewing the nut and pulling of the gas tube



MIG-O-MAT flame barrier 50.2504210

2. loosen the nut with the 19 mm or a 20mm wrench (depends on the model)



Technical note 111: **Changing external flame barrier**
of the **MIG-O-MAT** microflame series

MIG·O·MAT®



3. Remove the blue bracket by loosen the two 10mm wrench



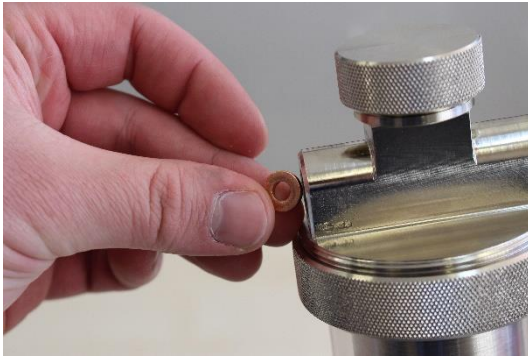
4. Unscrew the flame barrier with a 22 mm wrench. To hold the upper part, you can use a 19 mm wrench or better you clamp the hole top part in a vise. It is a right-hand thread. It could be helpful to remove the glasses before.



Technical note 111: **Changing external flame barrier**
of the **MIG-O-MAT** microflame series



5. Remove the old copper seal and place a new copper seal into the threaded hole



6. Screw the new flame barrier, the bracket and the tube



Technical note 111: **Changing external flame barrier**
of the **MIG-O-MAT** microflame series



7. Make a leakage test. If there is a leakage, please check if you have mounted the new copper seal and try to tighten the flame barrier a little bit more.

